

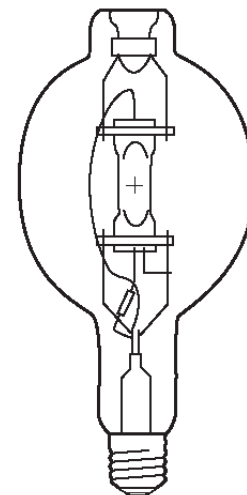
Lamp Current (A): 4.1A  
 Ignitor Voltage (Min.): 1KV  
 Luminaire Rating: Enclosed  
 Burning Position: Universal

**HIE 1000W/U/4K**
**Product Number: 46109**

**Lamp Type:** CWA Metal Halide

### Performance Data

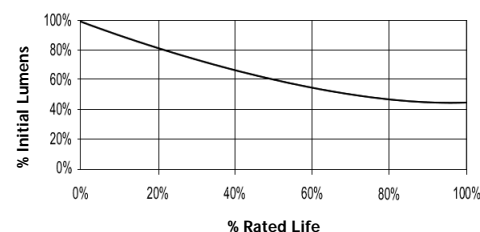
Light Output (Lumens @ 100 hours)	110000
Lamp Lumens Per Watt	110
Rated Life (Hrs. @ 10 Hr. /Start)	12000
Correlated Colour Temperature (K)	4000
Chromaticity (CIE - X Y)	385, 390
Colour Rendering Index (CRI) or (Ra)	68
Typical Warm Up Time (Minutes)	3-5
Typical Hot Restart Time (Minutes)	10-15
Burning Position	Universal



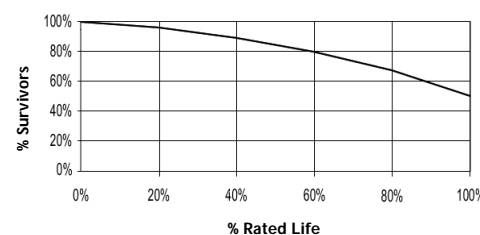
### Physical Data / Requirements

Base Designation	E40
Bulb Designation	BT180
Bulb Diameter (mm)	180
Max. Overall Length (mm)	395
Light Centre Length (mm)	245
Effective Arc Length (mm)	81
Max. Base Temperature (°C)	250
Max. Bulb Temperature (°C)	430
Luminaire Type	Enclosed
Socket Pulse Rating (KV)	-
Mercury Content (mg)	151.0

**Lumen Maintenance**



**Lamp Mortality**



### Lamp Electrical Data / Requirements

IEC Standard	-
Lamp Wattage (W)	1000
Lamp Operating Voltage (V)	263
Lamp Operating Current (Amps)	4.1
Min. Open Circuit Voltage (RMS)	380
Min. Starting Pulse (Peak V)	1000-1500
Min. Pulse Width at 900V (microseconds)	180
Min. Pulse Rate Per ½ cycle	1
Pulse Position (Electrical Degrees)	60-90

**Revision:** 07.06.12

### Notes:

- 1) This Product Specification contains data about typical performance at nominal power. Actual values may depend on ballast and applications. Complies with (CE), Low Voltage (CE), WEEE and RoHS Directives.
- 2) Lamp data is based on vertical operation. For horizontal operation lumen output will be reduced by 10% and lamp life reduced by 25%.