

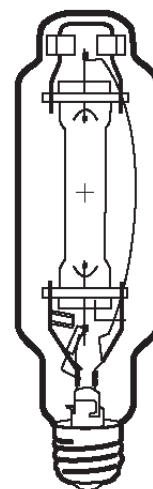
Lamp Current (A): 9.5A  
 Ignitor Voltage (Min.): 3.5KV  
 Luminaire Rating: Enclosed  
 Burning Position: Universal

**HIT 1000W/U/LU/BDX**
**Product Number: 00195**

**Lamp Type:** Designer Color

### Performance Data

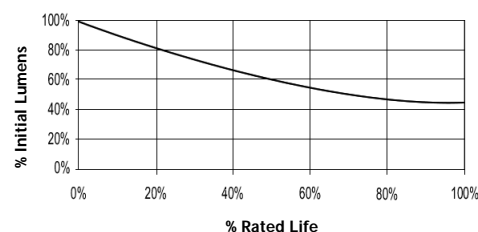
Dominant Wavelength	462
% Saturation	77
Rated Life (Hrs. @ 10 Hr. /Start)	8000
Correlated Colour Temperature (K)	-
Chromaticity (CIE - X Y)	180, 99
Colour Rendering Index (CRI) or (Ra)	N/A
Typical Warm Up Time (Minutes)	3-5
Typical Hot Restart Time (Minutes)	10-15
Burning Position	Universal



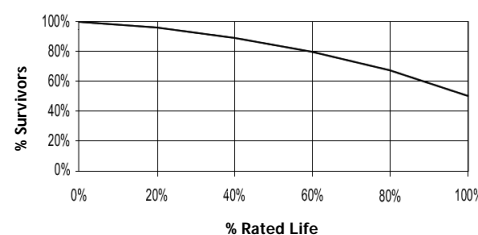
### Physical Data / Requirements

Base Designation	E40
Bulb Designation	T76
Bulb Diameter (mm)	76
Max. Overall Length (mm)	340
Light Centre Length (mm)	220
Effective Arc Length (mm)	80
Max. Base Temperature (°C)	250
Max. Bulb Temperature (°C)	525
Luminaire Type	Enclosed
Socket Pulse Rating (KV)	5
Mercury Content (mg)	45

**Lumen Maintenance**



**Lamp Mortality**



### Lamp Electrical Data / Requirements

IEC Standard	-
Lamp Wattage (W)	1000
Lamp Operating Voltage (V)	105
Lamp Operating Current (Amps)	9.5
Min. Open Circuit Voltage (RMS)	198
Min. Starting Pulse (Peak V)	3500-5000
Min. Pulse Width at 2700V (microseconds)	1
Min. Pulse Rate Per ½ cycle	1
Pulse Position (Electrical Degrees)	60-90, 240-270

**Revision:** 01.03.12

### Notes:

1) This Product Specification contains data about typical performance at nominal power. Actual values may depend on ballast and applications. Complies with (CE), Low Voltage (CE), WEEE and RoHS Directives.