

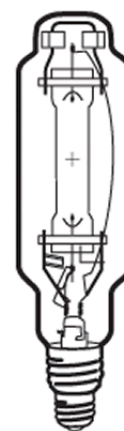
Lamp Current (A): 8.2A
 Ignitor Voltage (Min.): 0.6KV
 Luminaire Rating: Enclosed
 Burning Position: Horizontal $\pm 15^\circ$

HIT 1000W/HOR/743
Product Number: 00336

Lamp Type: Tubular Metal Halide

Performance Data

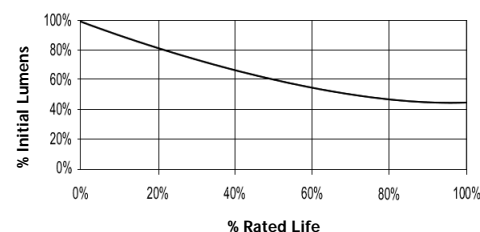
Light Output (Lumens @ 100 hours)	85000
Lamp Lumens Per Watt	85
Rated Life (Hrs. @ 10 Hr. /Start)	8000
Correlated Colour Temperature (K)	4300
Chromaticity (CIE - X Y)	368, 378
Colour Rendering Index (CRI) or (Ra)	68
Typical Warm Up Time (Minutes)	3-5
Typical Hot Restart Time (Minutes)	8-12
Burning Position	Horizontal $\pm 15^\circ$



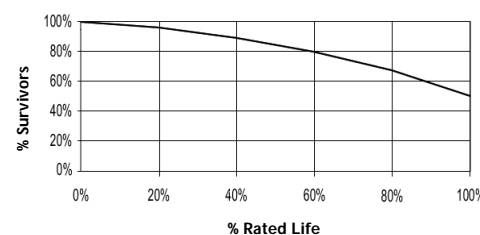
Physical Data / Requirements

Base Designation	E40
Bulb Designation	T76
Bulb Diameter (mm)	76
Max. Overall Length (mm)	340
Light Centre Length (mm)	220
Effective Arc Length (mm)	80
Max. Base Temperature (°C)	250
Max. Bulb Temperature (°C)	525
Luminaire Type	Enclosed
Socket Pulse Rating (KV)	5
Mercury Content (mg)	68

Lumen Maintenance



Lamp Mortality



Lamp Electrical Data / Requirements

IEC Standard	-
Lamp Wattage (W)	1000
Lamp Operating Voltage (V)	130
Lamp Operating Current (Amps)	8.2
Min. Open Circuit Voltage (RMS)	198
Min. Starting Pulse (Peak V)	600V
Min. Pulse Width at 2700V (microseconds)	1
Min. Pulse Rate Per 1/2 cycle	1
Pulse Position (Electrical Degrees)	60-90, 240-270

Revision: 13.01.12

Notes:

- 1) This Product Specification contains data about typical performance at nominal power. Actual values may depend on ballast and applications. Complies with (CE), Low Voltage (CE), WEEE and RoHS Directives.
- 2) This lamp is also compatible with a 3.0-4.5kV ignitor