

Lamp Current (A): 3.7A
 Ignitor Voltage (Min.): 3KV
 Luminaire Rating: Enclosed
 Burning Position: Base Up $\pm 15^\circ$

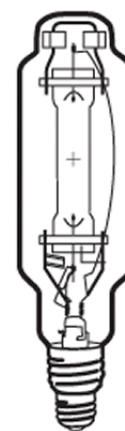
HIT 875W/BU/PS/740

Product Number: 00335

Lamp Type: SINGLE ENDED METAL HALIDE

Performance Data

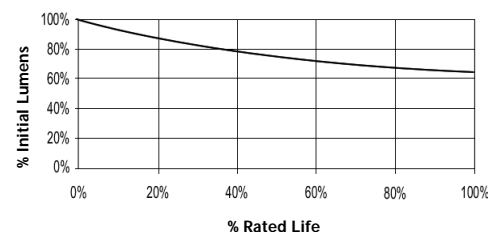
Light Output (Lumens @ 100 hours)	100000
Lamp Lumens Per Watt	114
Rated Life (Hrs. @ 10 Hr. /Start)	20000+
Correlated Colour Temperature (K)	4000
Chromaticity (CIE - X Y)	385, 390
Colour Rendering Index (CRI) or (Ra)	68
Typical Warm Up Time (Minutes)	3-5
Typical Hot Restart Time (Minutes)	8-12
Burning Position	Base Up $\pm 15^\circ$



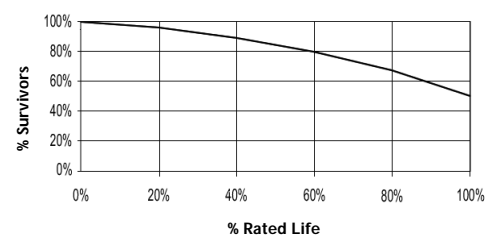
Physical Data / Requirements

Base Designation	E40
Bulb Designation	BT120
Bulb Diameter (mm)	76
Max. Overall Length (mm)	340
Light Centre Length (mm)	220
Effective Arc Length (mm)	98.3
Max. Base Temperature (°C)	250
Max. Bulb Temperature (°C)	450
Luminaire Type	Enclosed
Socket Pulse Rating (KV)	4.5
Mercury Content (mg)	108.5

Lumen Maintenance



Lamp Mortality



Lamp Electrical Data / Requirements

IEC Standard	-
Lamp Wattage (W)	875
Lamp Operating Voltage (V)	250
Lamp Operating Current (Amps)	3.7
Min. Open Circuit Voltage (RMS)	-
Min. Starting Pulse (Peak V)	3000-4500
Min. Pulse Width at 2700V (microseconds)	1
Min. Pulse Rate Per 1/2 cycle	1
Pulse Position (Electrical Degrees)	60-90, 240-270

Revision: -

Notes:

1) This Product Specification contains data about typical performance at nominal power. Actual values may depend on ballast and applications. Complies with (CE), Low Voltage (CE), WEEE and RoHS Directives.