

HQL 125 W E27

HQL | High intensity discharge lamps



- Factories and workshops
- Industrial installations
- Streets
- Car parks, courtyards
- Pedestrian zones, public squares
- Parks and gardens



Technical data

Electrical data

Nominal wattage	125 W
PFC capacitor at 50 Hz	10 μ F ¹⁾
Rated wattage	126.8 W
Lamp current	1.2 A
Rated lamp efficacy (standard condition)	47 lm/W

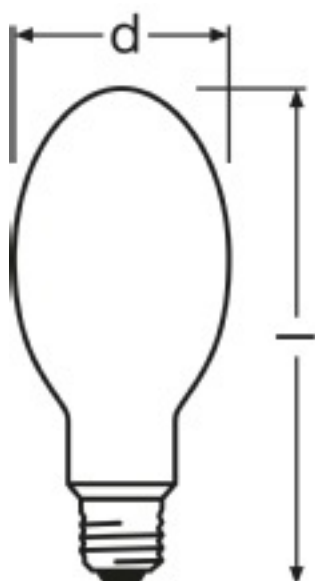
¹⁾ At rated voltage and $\cos \varphi \geq 0.9$

Light technical data

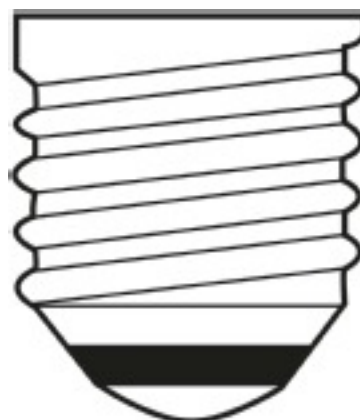
Nominal luminous flux	6300 lm
Color temperature	4100 K
Color rendering group	3
Rated luminous flux	6000 lm
Color rendering index Ra	47
Luminance	7 cd/cm ²
Rated LLMF at 2,000 h	0.92
Rated LLMF at 4,000 h	0.88
Rated LLMF at 6,000 h	0.85
Rated LLMF at 8,000 h	0.80
Rated LLMF at 12,000 h	0.78
Rated LLMF at 16,000 h	0.77
Rated LLMF at 20,000 h	0.75

Dimensions & weight

Diameter	76.0 mm
Length	168.0 mm



Product line drawing with letters



E27
IEC 7004-21

Base



E 27

Base

Colors & materials

Lamp mercury content	21.8 mg
Mercury-free	No

Temperatures

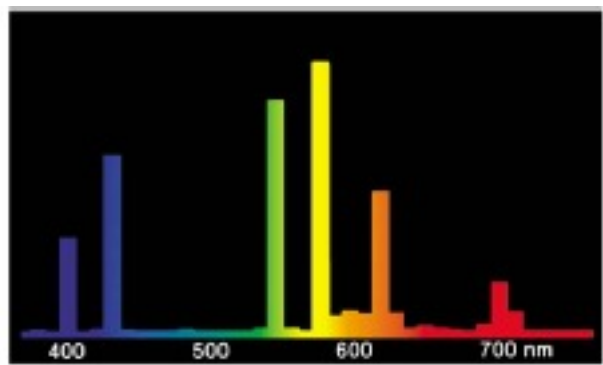
Maximum permitted outer bulb temperature	310 °C
Maximum permitted base edge temperature	210 °C

Lifespan

Rated lamp survival factor at 2,000 h	0.99
Rated lamp survival factor at 4,000 h	0.99
Rated lamp survival factor at 6,000 h	0.99
Rated lamp survival factor at 8,000 h	0.99
Rated lamp survival factor at 12,000 h	0.97
Rated lamp survival factor at 16,000 h	0.92
Rated lamp survival factor at 20,000 h	0.70
Operation mode LLMF/LSF	50 Hz

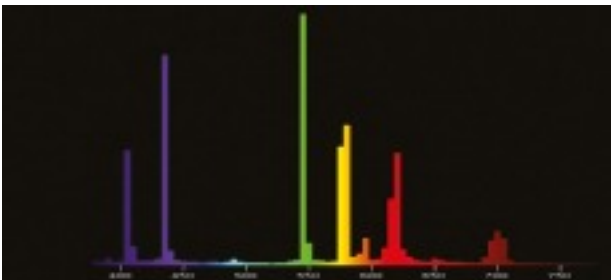
Additional product data

Base (standard designation)	E27
Design / version	Coated



HQL®

Spectral power distribution



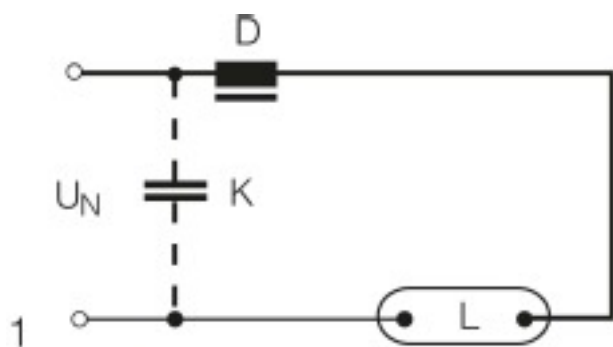
Spectral power distribution

Capabilities

Dimmable	No
Burning position	Any

Country specific categorizations

ILCOS	QE/R-125/42/3-H-E27-76/168
-------	----------------------------



Circuit diagram

Logistical Data

Product code	Packaging unit (Pieces/Unit)	Dimensions (height x width x length)	Gross weight	Volume
4050300012377	Round wrap 1	80 mm x 79 mm x 177 mm	84.80 g	1.12 dm ³
4050300212180	Shipping carton box 40	393 mm x 392 mm x 451 mm	4352.00 g	69.48 dm ³

Disclaimer

Subject to change without notice. Errors and omission excepted. Always make sure to use the most recent release.