

☒ Quadratic interpolation

Konfiguracja z pasem dzielacym

Project : Oswietlenie Al. Ujazdowskich

File : ... \Projekty\UJAZDO~1\UJAZDO~3.LPF

General information

Grid details

• Luminancja - Obserwator 1 (1)

General

Type : Rectangular

Activated : ☒

Masks ON : ☒

Colour :

Geometry

Start position

X : 1,500

Y : 0,567

Z : 0,000

Size

Count X : 10

Spacing X : 3,000

Size X : 27,000

Count Y : 9

Spacing Y : 1,133

Size Y : 9,067

Calculation

Luminance : ☒

Observer position

Mobile : ☐

dX : -61,500

dY : 1,133

dZ : 1,500

Road surface

RTable : R3007

Qo : 0,070

• Luminancja - Obserwator (2)

General

Type : Rectangular

Activated : ☒

Masks ON : ☒

Colour :

Geometry

Start position

X : 1,500

Y : 0,567

Z : 0,000

Size

Count X : 10

Spacing X : 3,000

Size X : 27,000

Count Y : 9

Spacing Y : 1,133

Size Y : 9,067

Calculation

Luminance : ☒

Observer position

Mobile : ☐

dX : -61,500

dY : 4,533

dZ : 1,500

Road surface

RTable : R3007

Qo : 0,070

• Luminancja - Obserwator (3)

General

Type : Rectangular

Activated : ☒

Masks ON : ☒

Colour :

Geometry**Start position**X : Y : Z : **Size**Count X : Spacing X : Size X :
Count Y : Spacing Y : Size Y : **Calculation**Luminance : ☒**Observer position**Mobile : ☐ dX : dY : dZ : **Road surface**RTable : Qo : • **Natezenie oswietlenia (4)****General**Type : Activated : ☒ Masks ON : ☒ Colour : **Geometry****Start position**X : Y : Z : **Size**Count X : Spacing X : Size X :
Count Y : Spacing Y : Size Y : **Calculation**Illuminance : ☒ Facet : • **Rownomiernoszcz wzdluzna - Pas 1 (5)****General**Type : Activated : ☒ Masks ON : ☒ Colour : **Geometry****Start position**X : Y : Z : **Size**Count X : Spacing X : Size X : **Calculation**Luminance : ☒**Observer position**Mobile : ☐ dX : dY : dZ : **Road surface**RTable : Qo : • **Rownomiernoszcz wzdluzna - Pas 2 (6)****General**Type : Activated : ☒ Masks ON : ☒ Colour :

Geometry**Start position**X : Y : Z : **Size**Count X : Spacing X : Size X : **Calculation**Luminance : ☒**Observer position**Mobile : ☐ dX : dY : dZ : **Road surface**RTable : Qo : • **Rownomiernosc wzdluzna - Pas 3 (7)****General**Type : Activated : ☒ Masks ON : ☒ Colour : **Geometry****Start position**X : Y : Z : **Size**Count X : Spacing X : Size X : **Calculation**Luminance : ☒**Observer position**Mobile : ☐ dX : dY : dZ : **Road surface**RTable : Qo : **Summary****Grid summary**

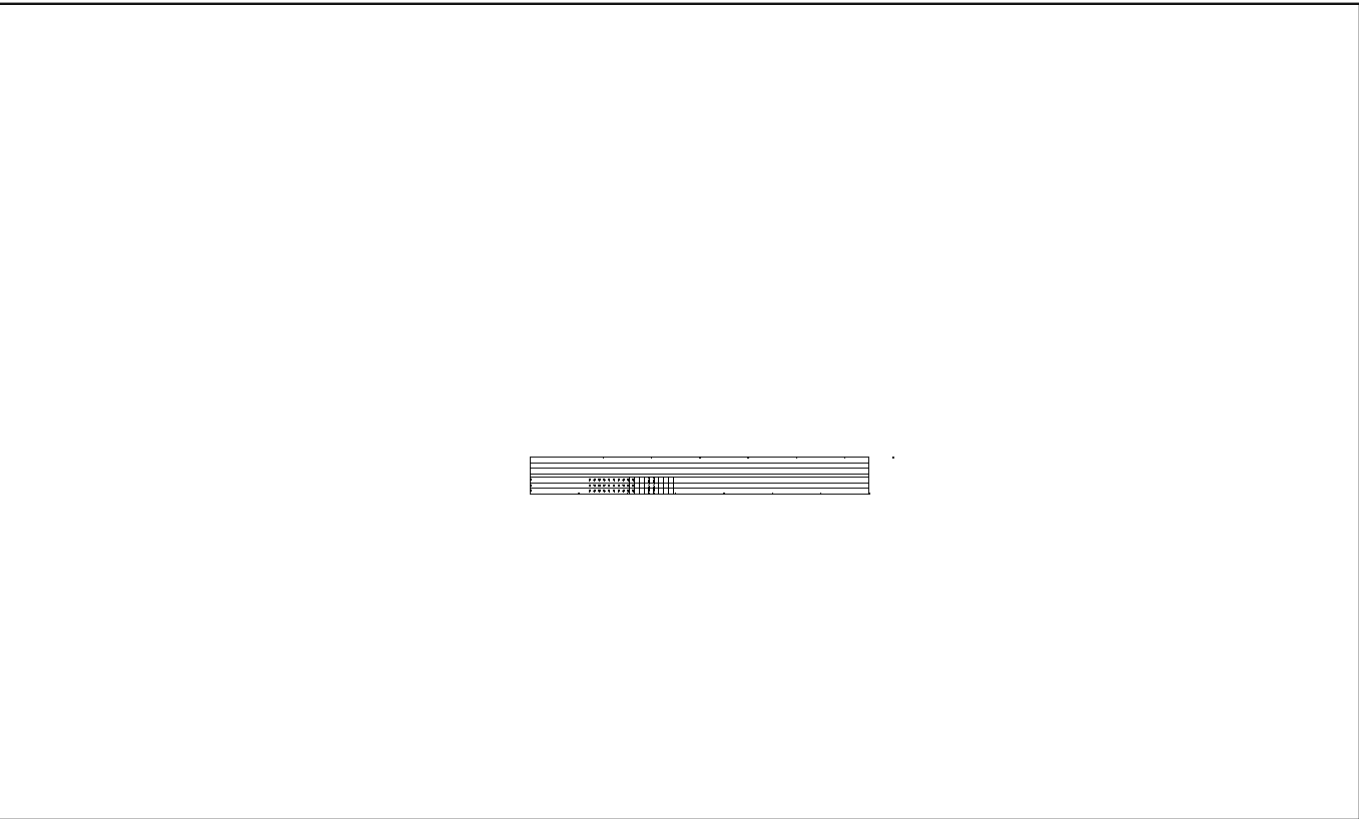
Average type : Arithmetic (A) or Weighted (W)

Luminancja - Obserwator 1 (1)	Min	Max	Ave (A)	Min/Max	Min/Ave
Luminance (cd/m²)	1,23	1,89	1,57	65,0	78,3
Luminancja - Obserwator (2)	Min	Max	Ave (A)	Min/Max	Min/Ave
Luminance (cd/m²)	1,23	2,14	1,66	57,6	74,3
Luminancja - Obserwator (3)	Min	Max	Ave (A)	Min/Max	Min/Ave
Luminance (cd/m²)	1,25	2,36	1,73	53,2	72,2
Natezenie oswietlenia (4)	Min	Max	Ave (A)	Min/Max	Min/Ave
Illuminance (lux)	12,8	38,9	27,0	33,0	47,6
Rownomiernosc wzdluzna - Pas 1 (5)	Min	Max	Ave (A)	Min/Max	Min/Ave
Luminance (cd/m²)	1,59	1,89	1,74	84,1	91,3
Rownomiernosc wzdluzna - Pas 2 (6)	Min	Max	Ave (A)	Min/Max	Min/Ave
Luminance (cd/m²)	1,63	1,95	1,75	83,7	93,4
Rownomiernosc wzdluzna - Pas 3 (7)	Min	Max	Ave (A)	Min/Max	Min/Ave
Luminance (cd/m²)	1,26	1,69	1,42	74,6	88,6

Observers summary

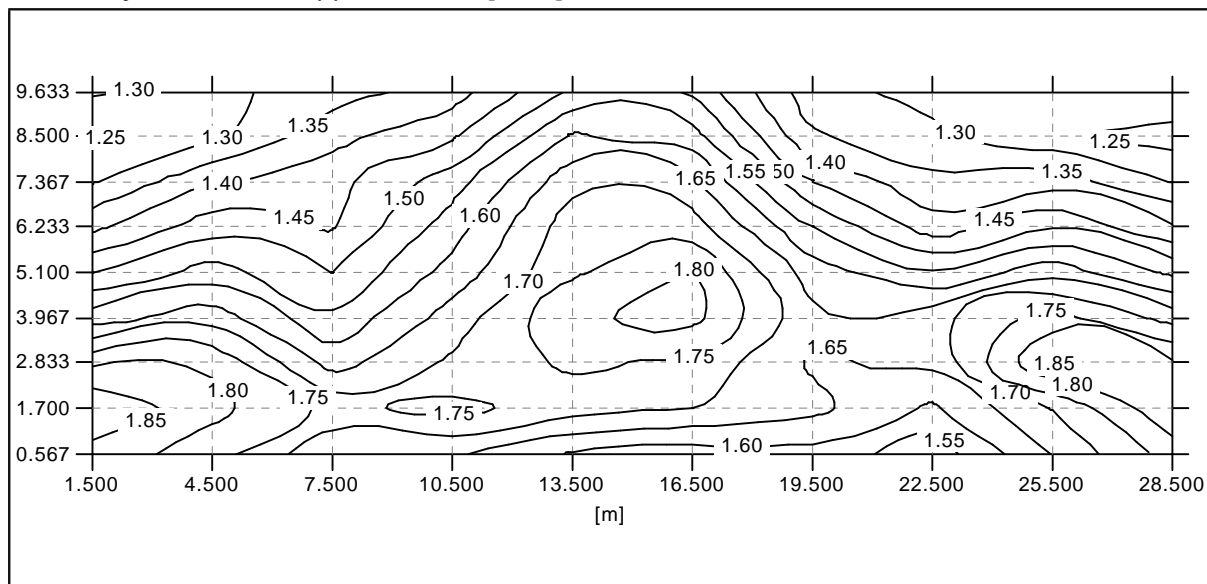
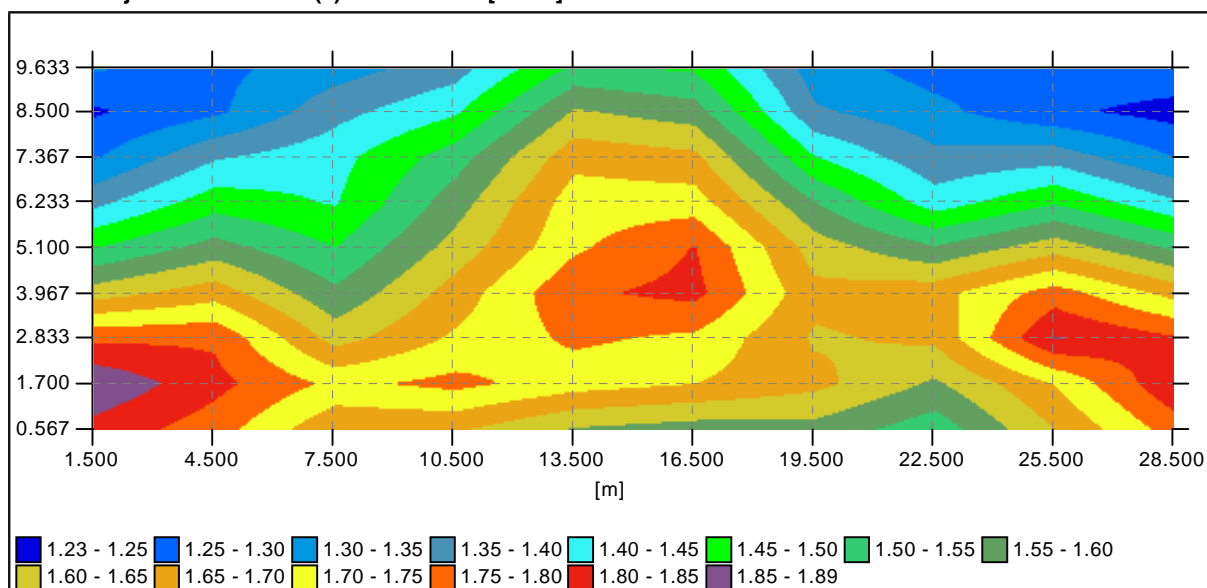
Observer (2) (Position : -20,375, 1,700, 1,500)	Minimum VL [cd/m ²] :	0,1	Direction [°] :	0
Observer (11) (Position : -23,375, 5,100, 1,500)	Maximum VL [cd/m ²] :	0,2	Direction [°] :	0
Observer (2) (Position : -20,375, 1,700, 1,500)	Minimum TI [%] :	2	Direction [°] :	0
Observer (11) (Position : -23,375, 5,100, 1,500)	Maximum TI [%] :	9	Direction [°] :	0

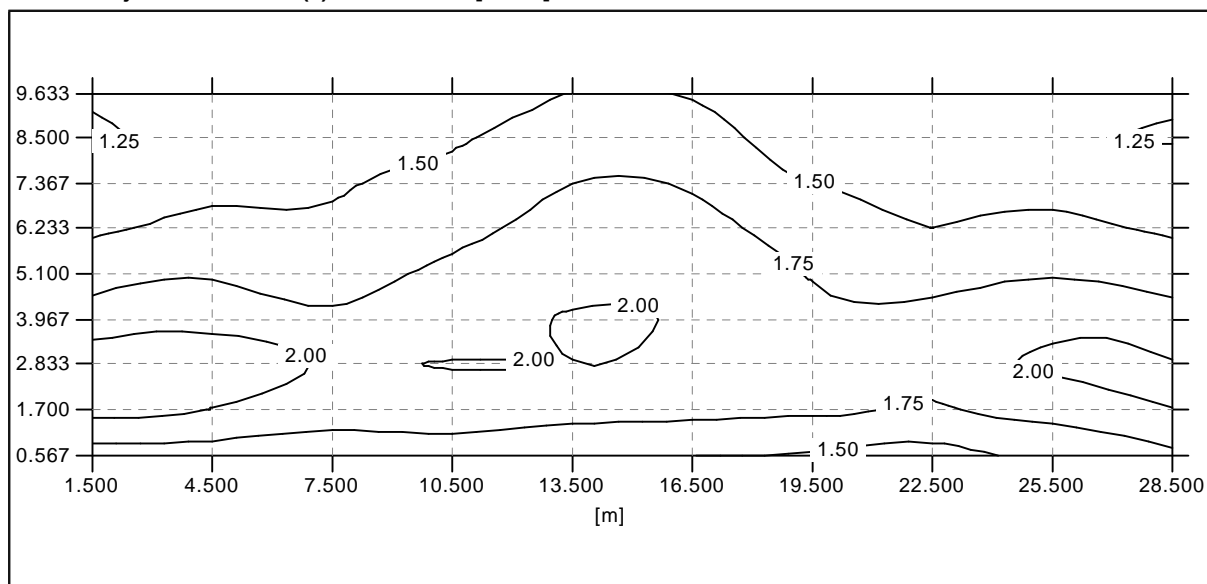
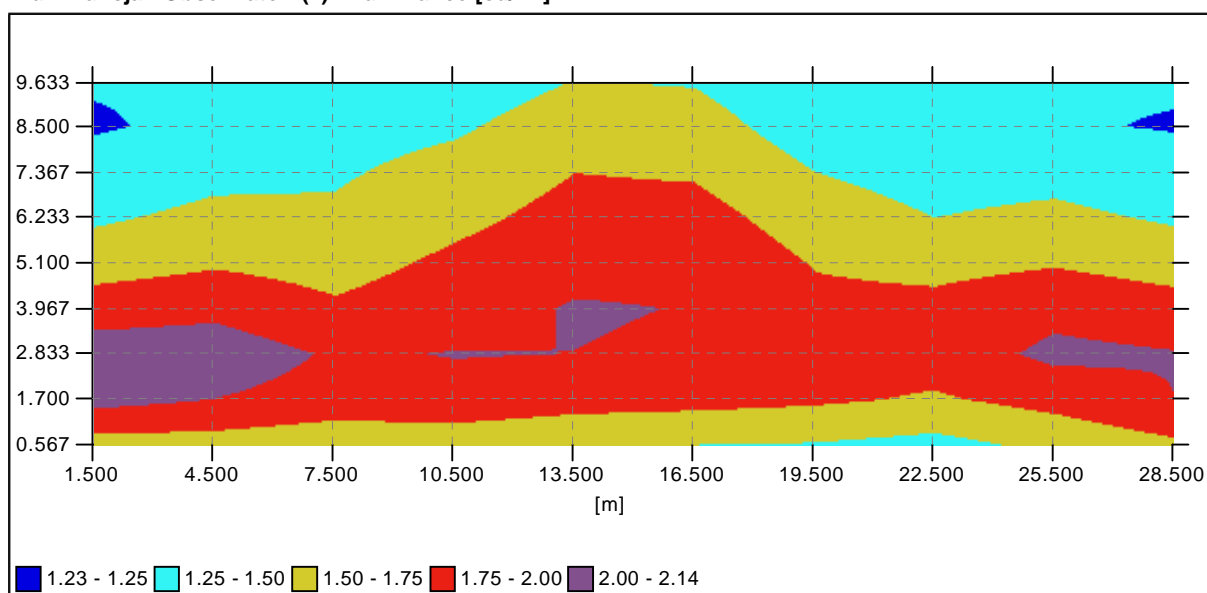
Current view Configuration (1)

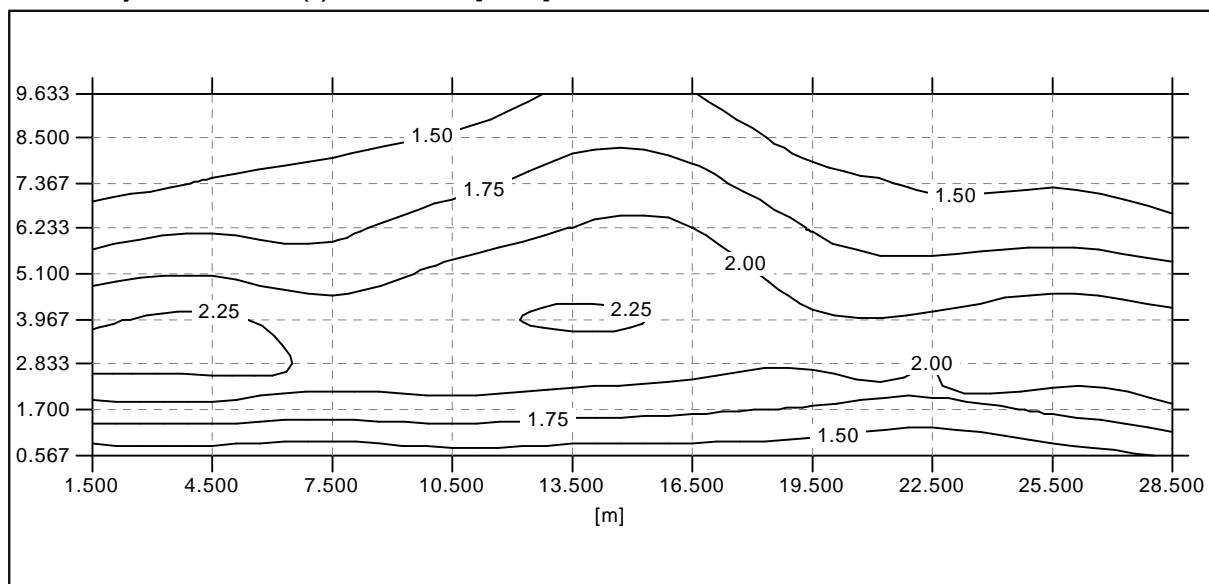
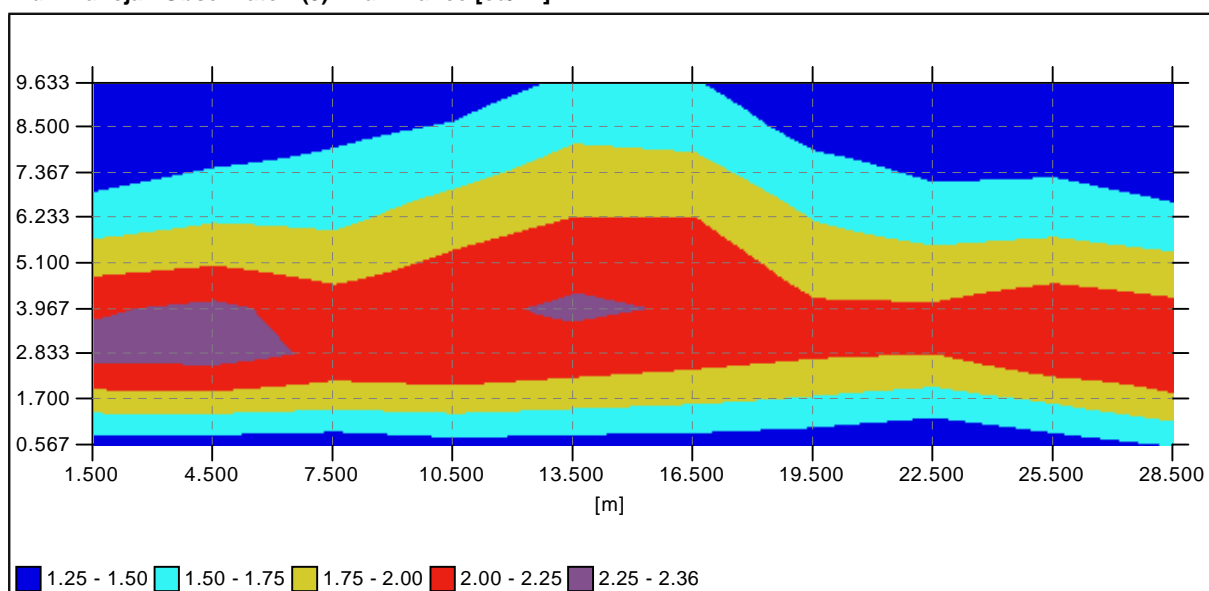


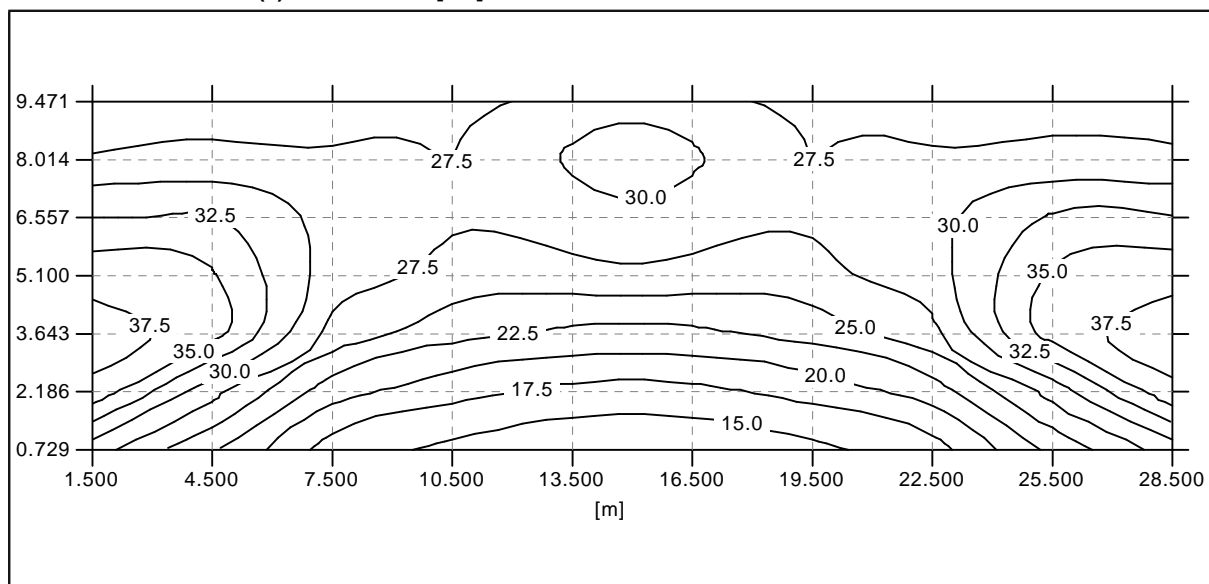
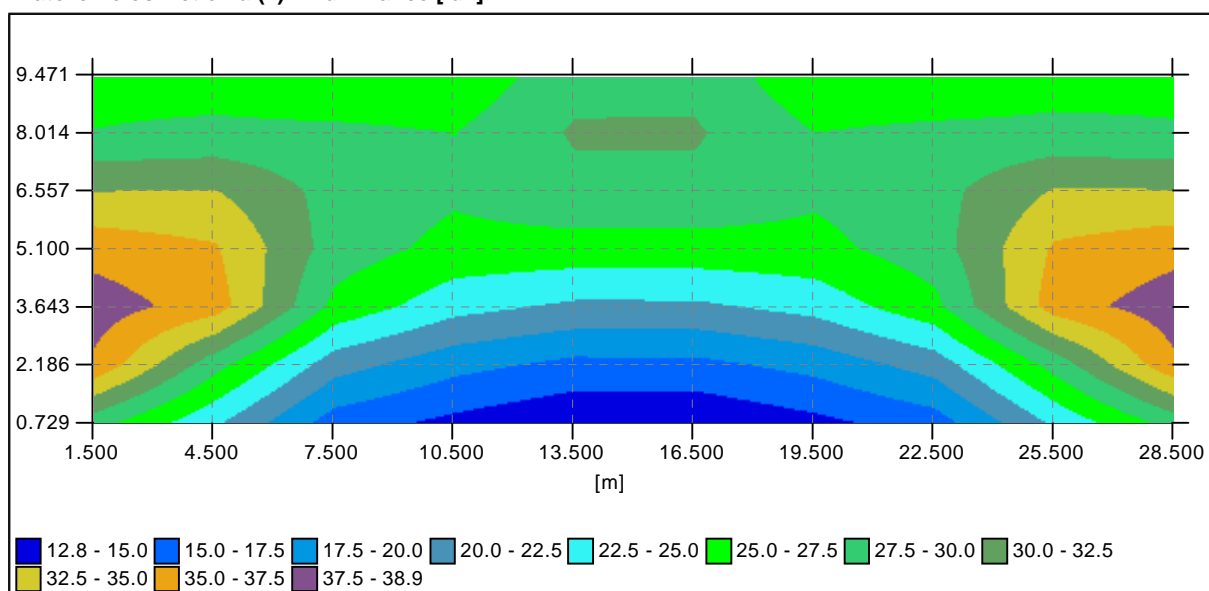
Grid results

Average type : Arithmetic (A) or Weighted (W)

Luminancja - Obserwator 1 (1) : Luminance [cd/m²]**Luminancja - Obserwator 1 (1) : Luminance [cd/m²]**

Luminancja - Obserwator (2) : Luminance [cd/m²]**Luminancja - Obserwator (2) : Luminance [cd/m²]**

Luminancja - Obserwator (3) : Luminance [cd/m²]**Luminancja - Obserwator (3) : Luminance [cd/m²]**


Natezenie oswietlenia (4) : Illuminance [lux]**Natezenie oswietlenia (4) : Illuminance [lux]**

General information

Configuration details

• Configuration (1)

Activated ☒

Matrix	Description	Flux	MF	Luminaire
911412	ALBANY LARGE/SMOOTH POLYCARBONATE/1312/SON-T/150/-30/96	22,5	0,80	

Group details

Linear													
	N°	Start			Luminaire				Geometry				
		X	Y	H	Matrix	Az	Inc	Rot	QtyX	S(X)	Rot	Tilt	Bank
✓	1	-30,000	0,000	10,000	911412	0,0	0,0	0,0	7	30,000	0,000	0,000	0,000
✓	2	-15,000	22,400	10,000	911412	180,0	0,0	0,0	7	30,000	0,000	0,000	0,000

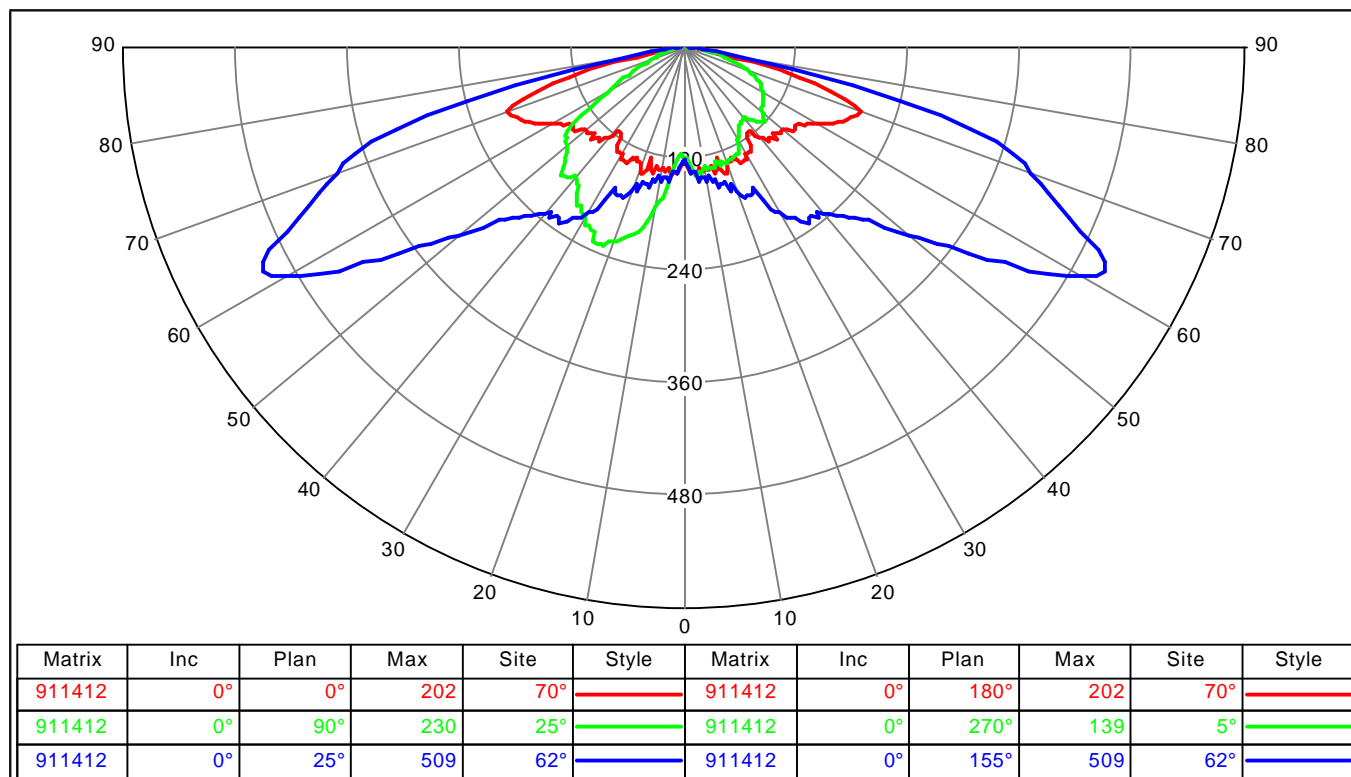
Photometric documents

911412



ALBANY LARGE/SMOOTH POLYCARBONATE/1312/SON-T/150/-30/96

Polar / Cartesian diagram



Utilization curve

